

Appendix

Views of School Crossings on Goulburn Street and Forest Road

Photographs taken by S Vogel, Wednesday December 11, 2019 at around 4 pm



Figure 1 View from Mole Street traffic light island towards the Forest Road intersection



Figure 2 Panorama view of Forest Road intersection.



Figure 3 View of Forest Road from Forest Road Goulburn Street Intersection, Note there is no sign indicating the presence of a school.



Figure 4 Forest Road is a Bus route



Figure 5 Variable speed sign on Forest Road and school crossing in background. Variable speed sign is opposite of a fixed 50 km/h sign that is obscured by tree foliage.



Figure 6 50 km/h speed sign slightly obscured by tree on Forest Road



Figure 7 View from Goulburn Street Road with the school's tennis court in the background. Note Variable speed sign obscured by tree. No sign indicating the presence of a school. Trees in centre lane obscuring view.

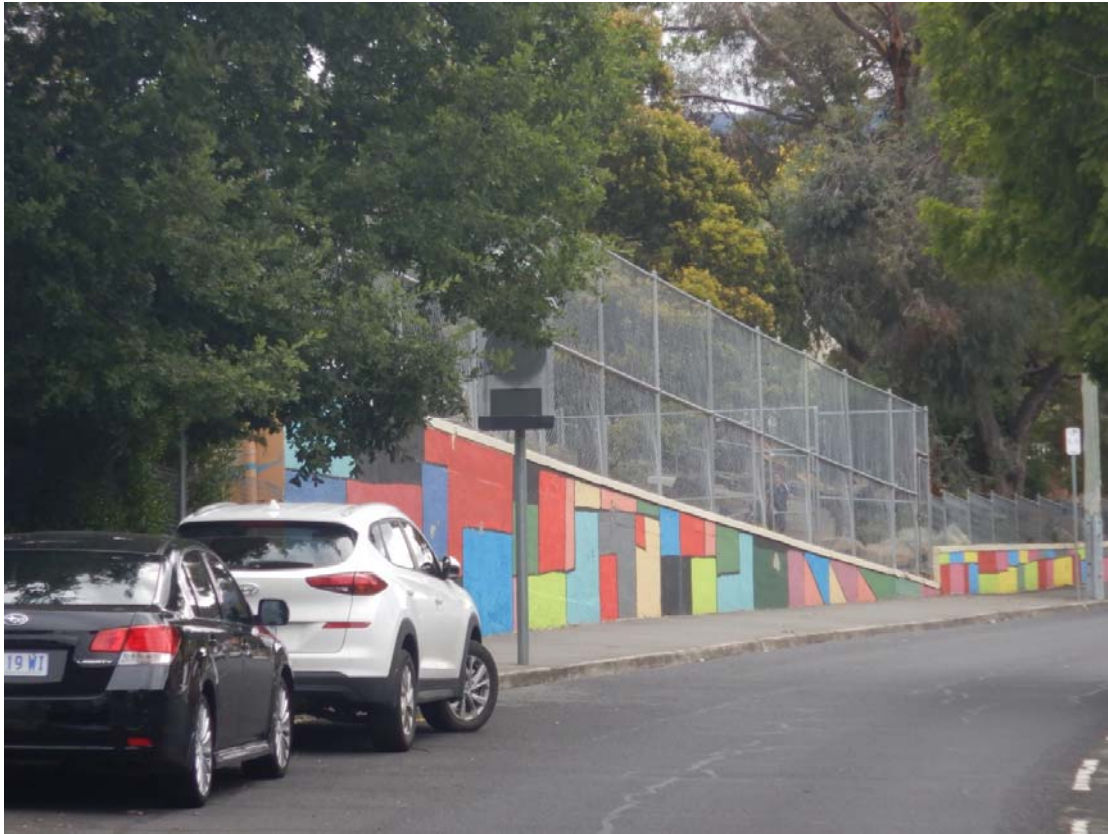


Figure 8 Close up of variable speed signage partially obscured by tree



*Figure 9 View of school crossing on Goulburn Street from uphill lane. School Crossing flag posts are barely noticeable
Photo taken at about 4 pm*



Figure 10 View of School crossing from pedestrian walk way opposite to the school.



Figure 11 Details of school crossing on Goulburn Street.



Figure 12 Detail of crossing marker. Note colour has significantly faded and is no longer vibrant or alerting



Figure 13 Goulburn Street School Crossing view of Down Hill traffic



Figure 14 50 km/h speed sign on up hill lane past the school crossing at Cane Street.



Figure 15 Close up of variable speed sign for downhill traffic. Note Signage is blending into street scape and no signage indicating the presence of a school. Crossing itself is blending into street scape



Figure 16 Down Hill Traffic view of the school crossing from further up the street. Note trees in centre line obstructing view